

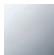

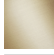

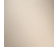


SYMETRICS Concealed two-way diverter - Chrome

IMO

36 200 980

- rotary diverter
- rosette 60 x 60 mm



| | | |
|---|-------------------------------------|---------------|
|  | Chrome | 36 200 980-00 |
|  | Brushed Platinum | 36 200 980-06 |
|  | Brushed Light Gold | 36 200 980-27 |
|  | Brushed Durabronze (23kt Gold) | 36 200 980-28 |
|  | Brushed Champagne (22kt Gold) | 36 200 980-46 |
|  | Champagne (22kt Gold) | 36 200 980-47 |
|  | Brushed Dark Platinum | 36 200 980-99 |

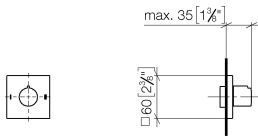
Required miscellaneous



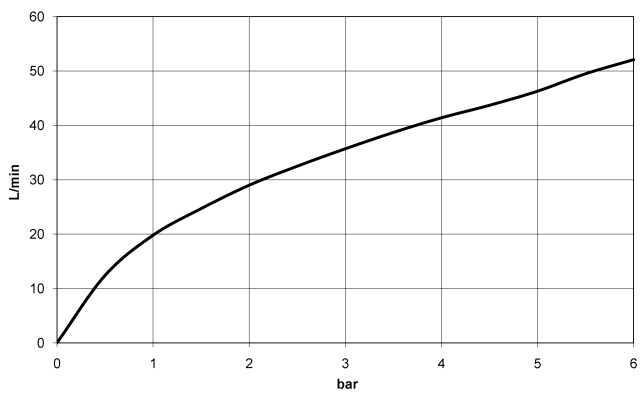
- Concealed two-way diverter -** 35 202 970 90
- max. recess depth 160 mm
 - min. recess depth 85 mm

36 200 980

mm [inches]



Flow rate chart

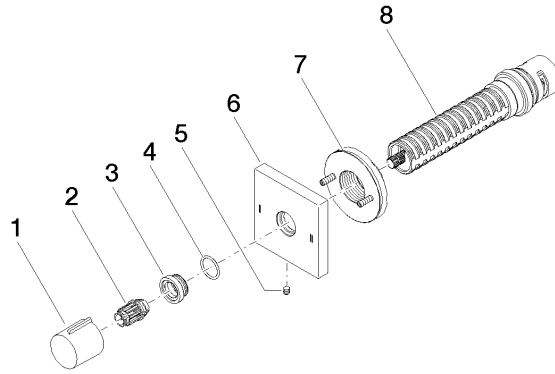


Certificates

LGA_38379.

WRAS_2307045.

36 200 980



Spare parts list

| No. | Item Number | Name | Quantity used | Delivery time |
|-----|--------------------|------------|---------------|---------------|
| 1 | 09 20 98 001-00 | handle | 1 | 10 |
| 2 | 09 12 12 005 90 | fixing cap | 1 | 2 |
| 3 | 09 12 12 043-00 | base | 1 | 10 |
| 4 | 09 14 10 017 90 | seal | 1 | 2 |
| 5 | 09 31 11 294 90 | pin | 1 | 2 |
| 6 | 09 27 98 037-00 | rosette | 1 | 10 |
| 7 | 90 21 02 181 00 90 | disc | 1 | 2 |
| 8 | 90 90 03 304 10 90 | diverter | 1 | 2 |